



**PLOTS | FLATS | VILLAS | ARCHITECTURE WORKS  
INTERIOR DESIGNERS  
LANDSCAPING / TURNKEY PROJECTS  
VASTU CONSULTANT**

**Our Website  
[www.ashabuilder.com](http://www.ashabuilder.com)**

**“Building is not just about shelter. It's about realizing dreams,  
making statements, creating spaces where life happens.”**

**हमारा सपना सबका घर हो अपना ।**



## Mr. Rahul Soni

### Founder & CEO – Asha Builder

“रियल एस्टेट सिर्फ जमीन, ईंटों और इमारतों का काम नहीं है। यह एक दृष्टि (Vision), धैर्य और ऐसी चीज़ बनाने के साहस के बारे में है जो पीढ़ियों तक कायम रहे।

हर सफल प्रोजेक्ट एक सपने से शुरू होता है - ऐसा सपना जिसमें परिवारों के लिए बेहतर जगह बनाई जाए, जहाँ वे आराम से रह सकें, आगे बढ़ सकें और अपना भविष्य बना सकें। रियल एस्टेट में अवसर हमेशा उन लोगों के लिए होते हैं जो छोटी अवधि के दिखावे के बजाय लंबी अवधि की असली वैल्यू पर विश्वास करते हैं।

मेरा हमेशा से मानना रहा है कि प्रॉपर्टी में समझदारी से किया गया निवेश लोगों की जिंदगी बदल सकता है। जमीन कभी खत्म नहीं होती, और एक अच्छी तरह से बनाया गया घर हर परिवार के लिए सुरक्षा, स्थिरता और गर्व का प्रतीक बन जाता है।

हमारा उद्देश्य सिर्फ घर बनाना नहीं है, बल्कि हर क्लाइंट के साथ विश्वास, गुणवत्ता और लंबे समय तक चलने वाले रिश्ते बनाना है। जब लोग अपनी मेहनत की कमाई हमारे साथ निवेश करते हैं, तो वे सिर्फ पैसे नहीं लगाते - वे अपने सपने और उम्मीदें भी हमारे साथ जोड़ते हैं। यही जिम्मेदारी हमें हर दिन बेहतर काम करने के लिए प्रेरित करती है।

रियल एस्टेट में सफलता रातों-रात नहीं मिलती। यह समर्पण, ईमानदारी, कड़ी मेहनत और चुनौतियों के बावजूद लगातार आगे बढ़ते रहने के संकल्प से मिलती है।

मेरा लक्ष्य सरल है - लोगों को समझदारी से प्रॉपर्टी में निवेश करने के लिए मार्गदर्शन देना, मूल्यवान स्थान बनाना और ऐसी विरासत तैयार करना जो आने वाली पीढ़ियों तक मजबूत बनी रहे।

# Build Your Dream Home with 100% Transparency



**100%**  
Money Safety



**470+**  
Quality Checks



**500+**  
Homes Delivered



# Our Team Members

**Mona Thakur**

Senior Relationship  
Manager

5+ Years of Experience

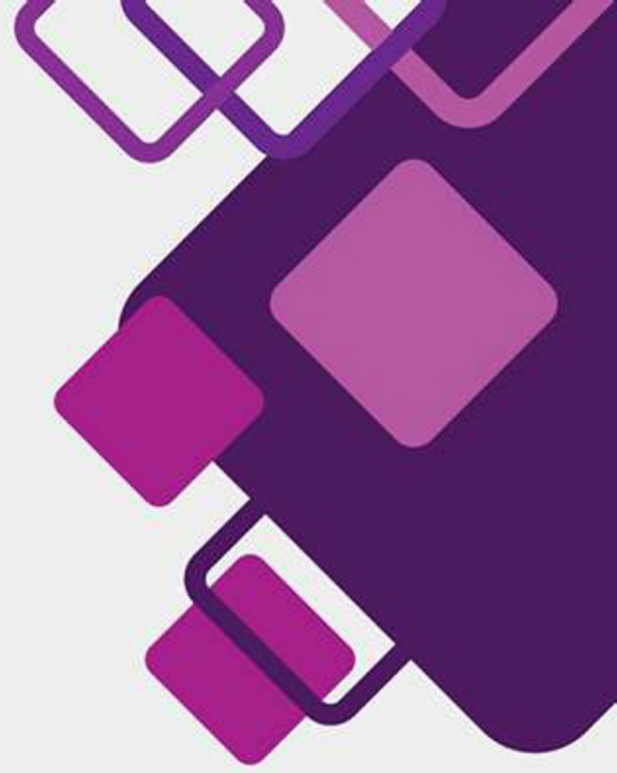
**Relationship  
Manager**





# Ar. Geetika Bassi

Architect | Interior Designer | Valuer



## BUSINESS SERVICES :

- Specializing in Residential
- Commercial
- Institutional & Hospitality Projects

**8+ YEARS OF EXPERIENCE IN  
DESIGNING & VALUATION**

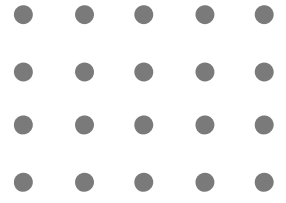


**Vikas Singh**  
Senior Civil Engineer  
& Technical Advisor

**12+ Years of Experience**

In Construction- Including Malls,  
Highways, ROBs, Commercial,  
and Residential Buildings

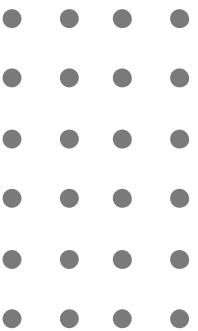




**Harshita Khajuria**

**5+ Years of Experience**

**Operation  
Manager**



# घर बनाओ ऐसा कि जो चले सालो साल ।

## PROFESSIONAL BUILDING CONSTRUCTION

- Commercial
- Institutional
- Residential
- Industrial
- Hospital
- Hotel




### Why Choose Us?

At Asha Builder, we are dedicated to providing top-tier professional building services customized to meet the unique needs of our clients. Our array of services ensures that your project, whether its new construction or renovation it is executed with the highest standards of quality, safety, and efficiency.

- **Expertise and Experience:** Our team consists of highly skilled professionals with extensive experience in the building industry.
- **Quality Assurance:** We are committed to delivering superior quality in every aspect of our services.
- **Customer Satisfaction:** Your satisfaction is our top priority. We work closely with you to ensure your vision is realized.
- **Innovative Solutions:** We leverage the latest technology and industry practices to provide innovative solutions for your building needs.
- **Sustainability Focus:** We are dedicated to sustainable building practices that benefit both you and the environment.

# TURNKEY CONSTRUCTION SERVICES

## FOR INDUSTRIAL COMMERCIAL AND RESIDENTIAL PROJECTS

-  USING MATERIAL FOR CONSTRUCTION
-  PROFESSIONAL TEAM FOR HANDLING WORK
-  ON - TIME PROJECT DELIVERY

### **Using Best Material for Construction**

We have the best construction materials, including durable concrete, strong steel, versatile wood, efficient bricks, aesthetic glass, and top-notch insulation. Our materials ensure optimal durability, safety, and energy efficiency for any building project.

### **Professional Team for Handling All Work**

Our professional team excels in all aspects of architecture and construction, ensuring precision and quality. From initial design to final build, we manage every detail with expertise and efficiency, delivering outstanding results for all your project needs.

### **On Time Project Delivery**

We ensure your construction projects are completed within the scheduled timeframe. Our efficient management and dedicated team work diligently to meet deadlines without compromising on quality, by providing reliable and timely results for every project.

# About Us

Welcome to Asha Builder, where craftsmanship meets innovation to redefine spaces. As an exceptional construction company and interior designer, we take pride in transforming dreams into reality. Our dedicated team of professionals brings years of expertise to every project, ensuring precision and attention to detail.

We create more than just structures; we craft living spaces that resonate with your vision.

Our hands-on approach guarantees quality craftsmanship and timely delivery from concept to completion. Our interior design services add a perfect finishing touch, harmonizing aesthetics with functionality seamlessly.

Trust us to build not just structures but homes filled with warmth and character. Experience the Asha difference – where your aspirations meet our dedication, resulting in inspiring and enduring spaces.



**Let Asha Builder Be The Architect  
Of Your Dreams !**

# House Elevations





# Our Happy Clients







# FINANCING YOUR FUTURE WITH EASE

## 100% Loan Facilities Available

### **Complete Coverage**

We offer a 100% loan facility, ensuring you have the full financial support needed to achieve your goals.

### **Competitive Rates**

We provide complete loan coverage at competitive and affordable interest rates.

### **Fast Approvals**

Benefit from our efficient approval process, allowing you to move forward with your plans without delay.

### **Personalized Service:**

Our team of experts is dedicated to providing personalized support, guiding you in every step of the way from application to disbursement.

### **Easy EMI Options**

We have various EMI options with flexible time period, making it easy to manage your finances.



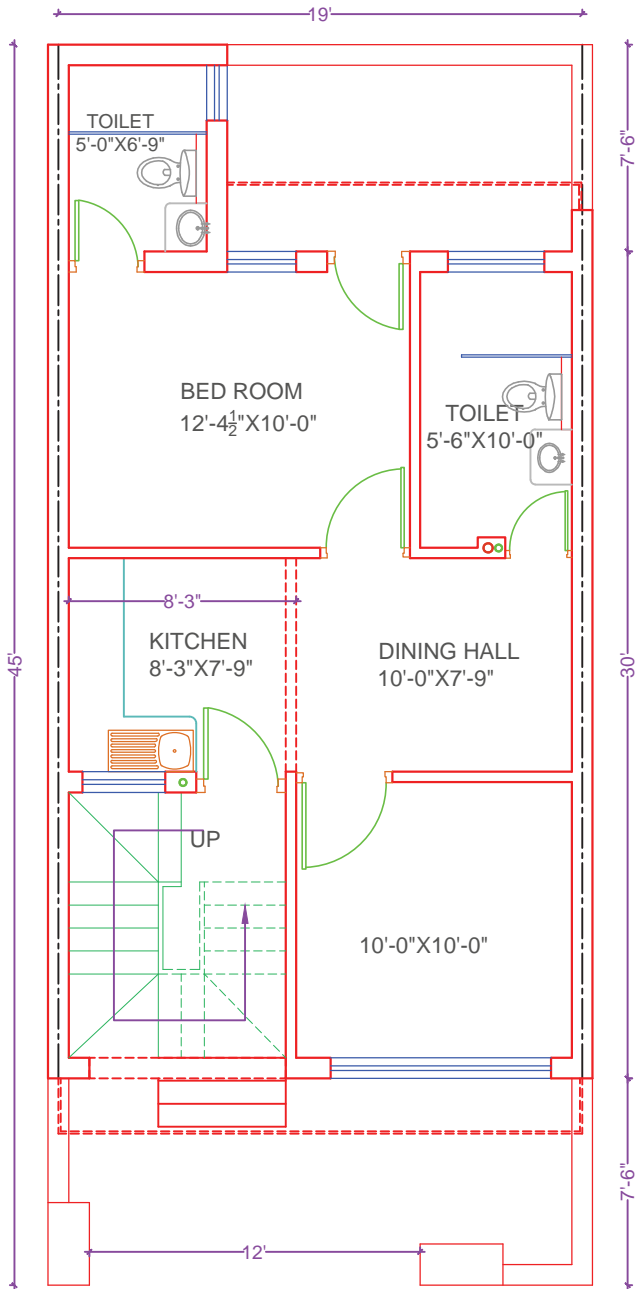
**BUY YOUR PLOT AND WE WILL**  
**Construct home**  
**FOR YOU AT YOUR PLANNING**

*“You Can Dream, Create, Design, and Build the Most  
Wonderful Place in The World.  
But It Requires People to Make the Dream a Reality”*

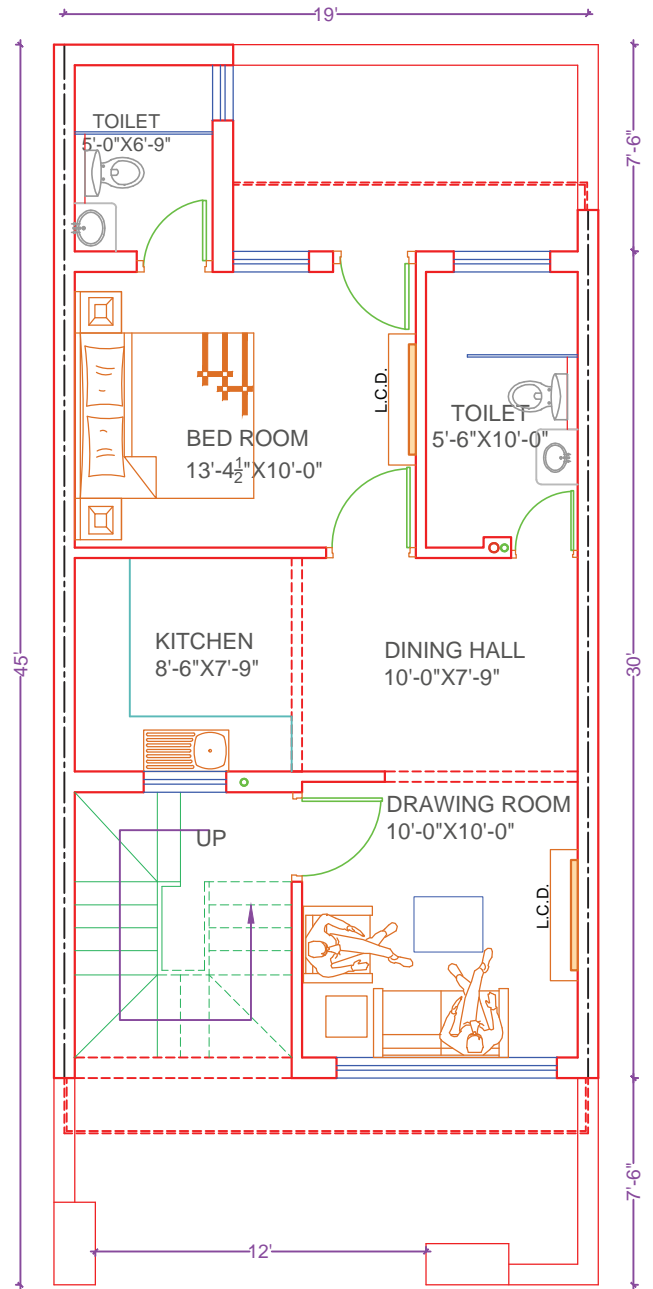


# LAYOUTS

## LAYOUT FOR 100 GAJ

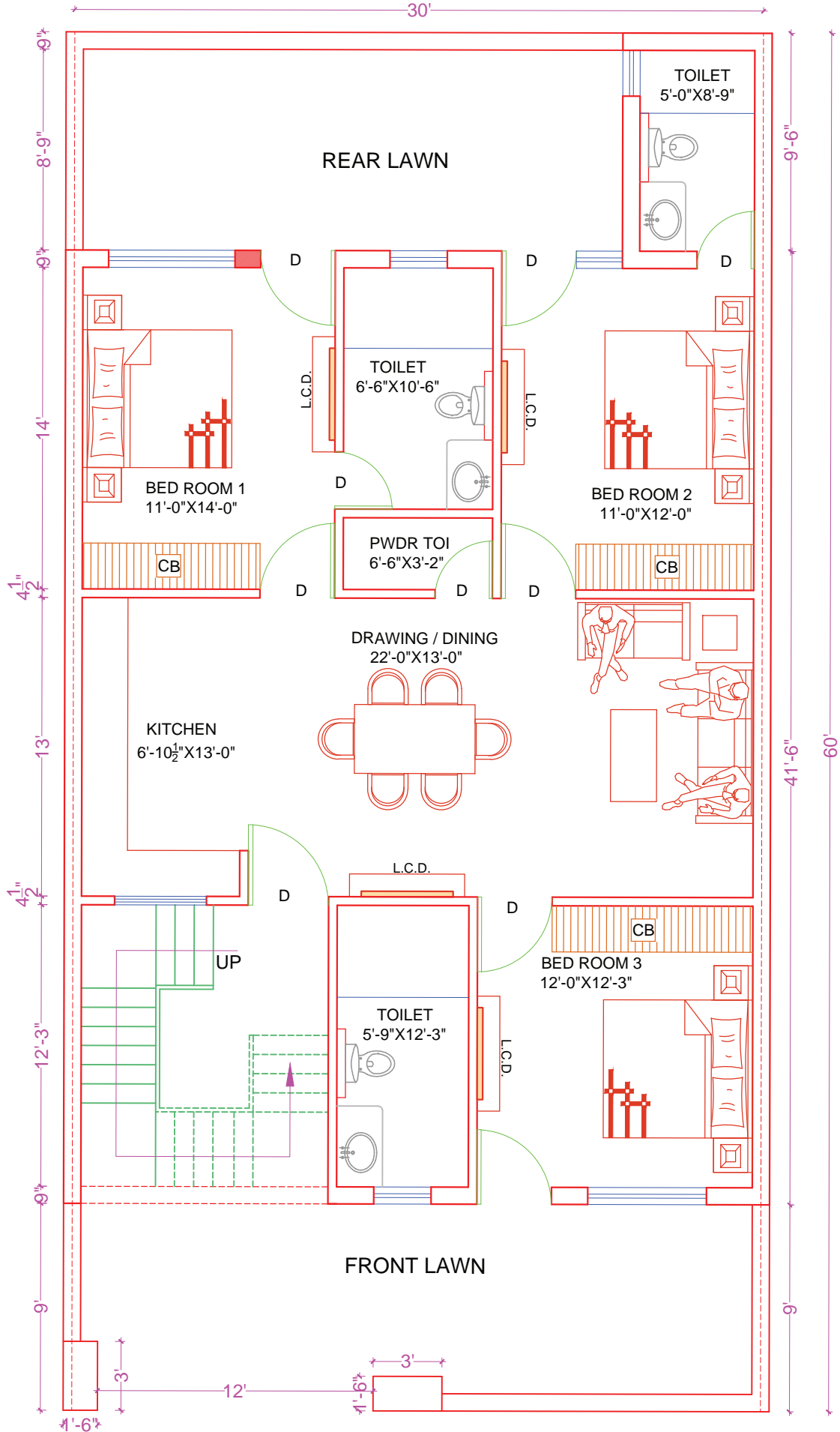


GROUND FLOOR PLAN-01



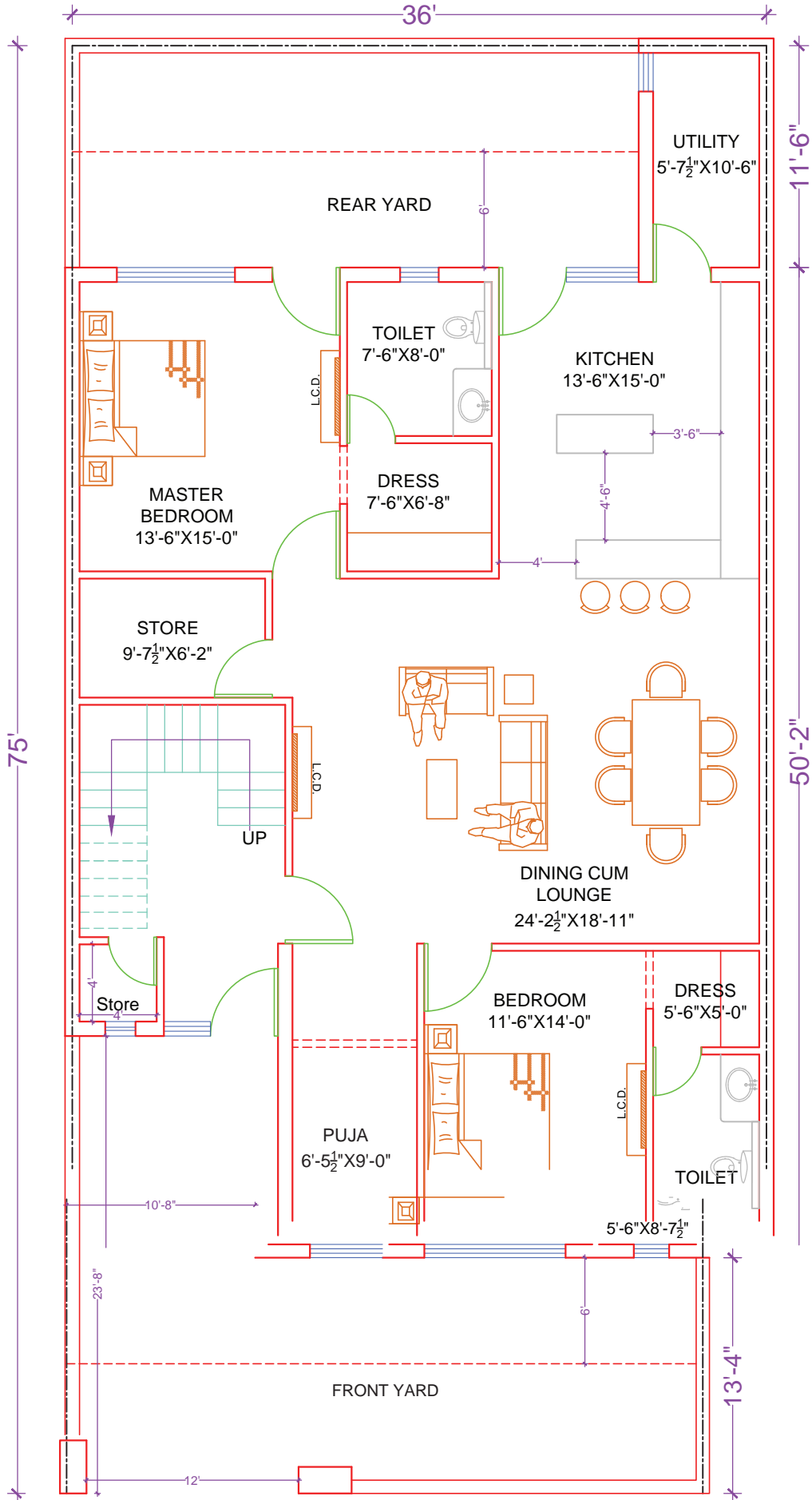
GROUND FLOOR PLAN-02

# LAYOUT FOR 200 GAJ



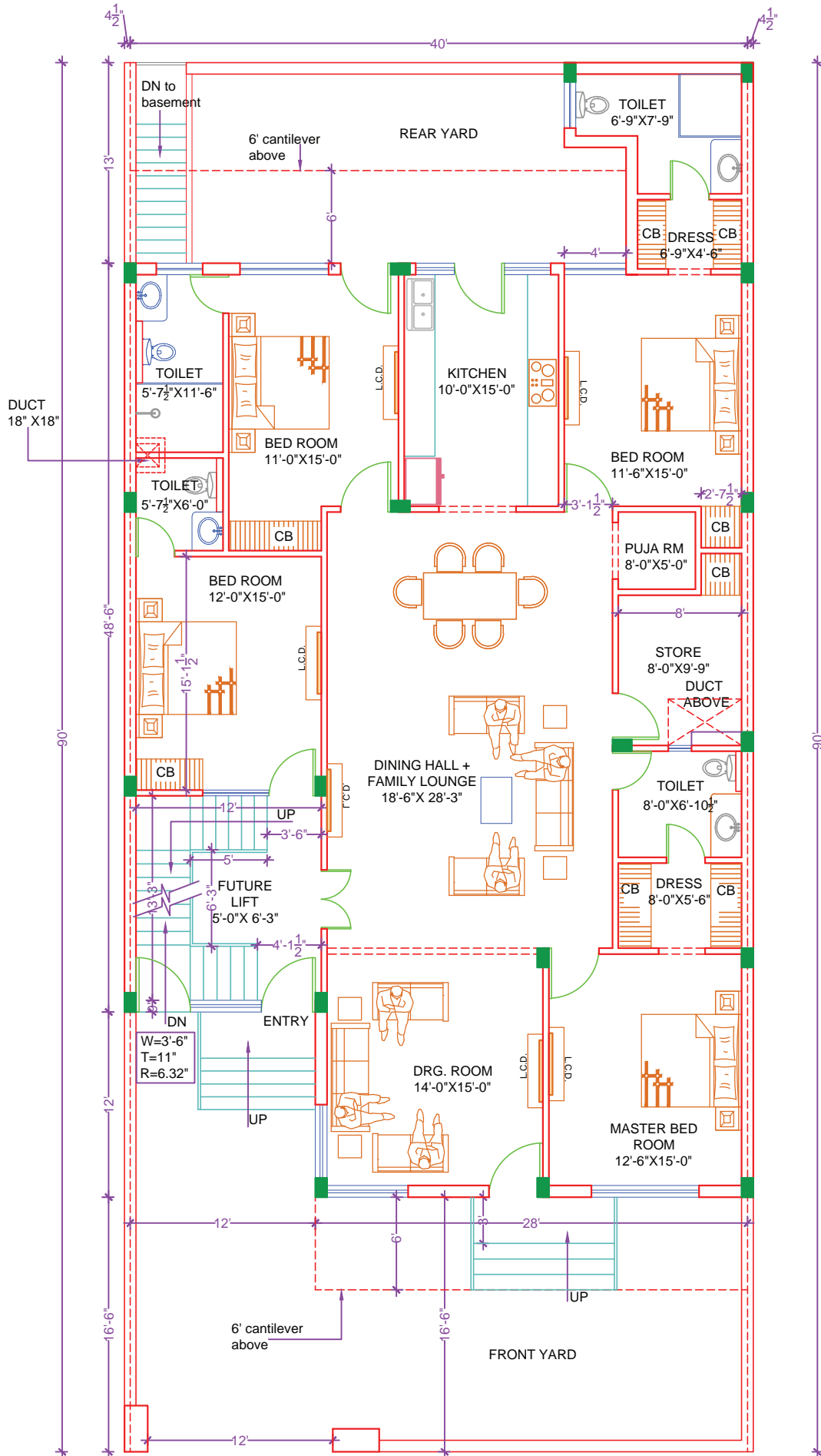
GROUND FLOOR PLAN

# LAYOUT FOR 300 GAJ



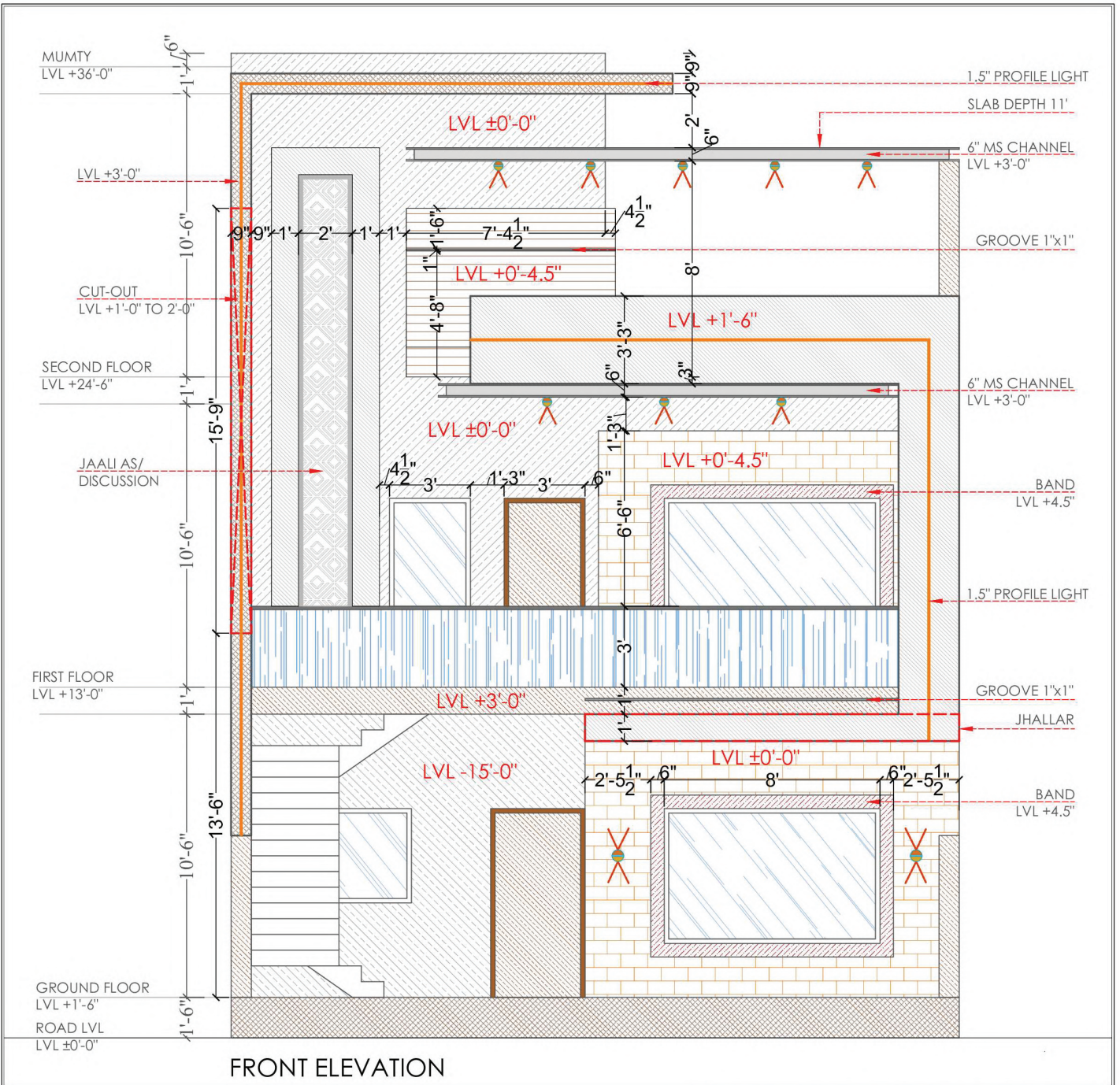
GROUND FLOOR PLAN

# LAYOUT FOR 400 GAJ



**GROUND FLOOR PLAN**

# ELEVATION



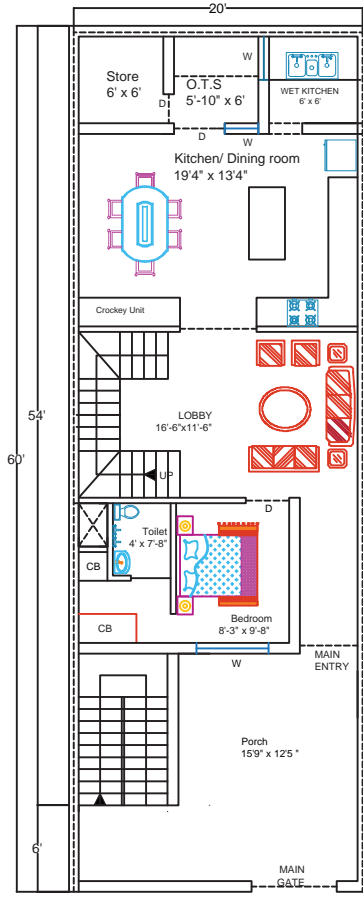
	CLIENT NAME:- VIVEK	GENERAL NOTES:	DRAWING TITLE:- FRONT ELEVATION	DRN BY:- Ar. YUVRAJ
	TYPE:- RESIDENTIAL			CHKD BY:- Ar.
				SCALE:- NTS
				DATE:-21-07-2025

# 3D Render

Plot size ( 20 x 60 ft )



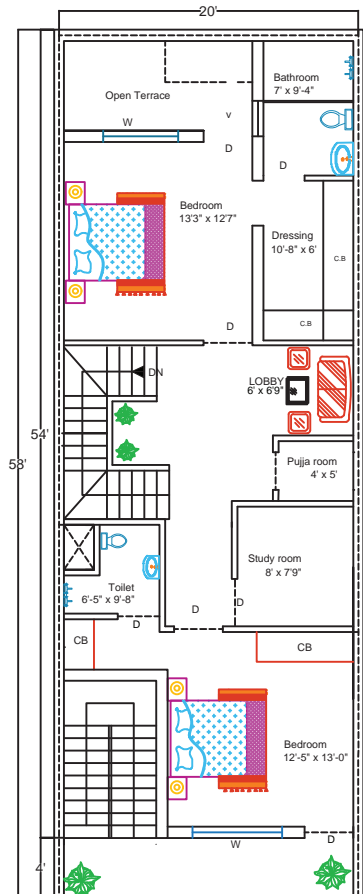
# Plans and 3D Layouts



GROUND FLOOR



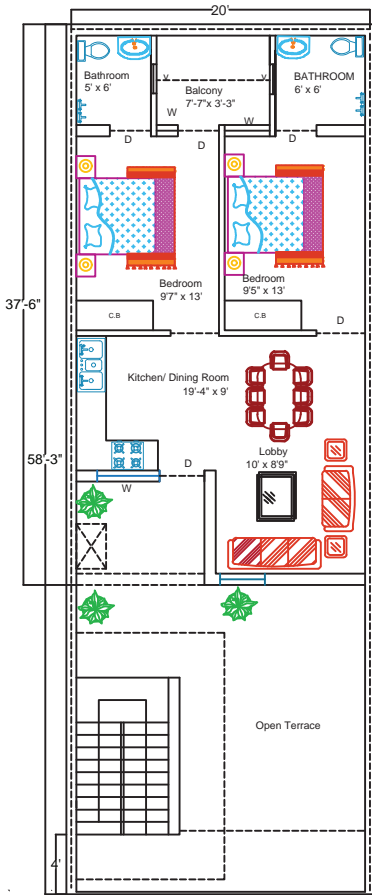
Ground Floor



FIRST FLOOR



First Floor



SECOND FLOOR



Second Floor

# 3D RENDERS





# BUILDING REFERENCES





# ASHA BUILDER

## Complete House Planning & Drawing Services

At Asha Builder, we believe that a perfect home begins with perfect planning. Our experienced team provides complete architectural and design drawings to ensure that every detail of your dream home is planned professionally before construction begins.

### Drawing Charges

- ₹167 per sq. ft.

### Our Complete Drawing Package Includes

1. 🏠 **Architectural Floor Plans** – Smart and practical space planning.
2. 🏠 **Luxury Elevation Design** – Unique and modern front elevation concepts.
3. 🛋️ **Interior Layout Planning** – Proper furniture and interior space planning.
4. 💡 **Electrical Layout Drawings** – Complete electrical point planning
5. 🚰 **Plumbing Layout Drawings** – Water supply and drainage system planning.
6. 🏗️ **Structural Drawings** – Beam, column, and slab structural details.
7. 📐 **Detailed Working Drawings** – Accurate drawings for smooth construction.
8. 🎥 **3D Video Walkthrough** – Experience your home before it is built.
9. 🖼️ **3D Exterior Views** – High-quality front elevation visualization.
10. 🏠 **3D Interior Views** – Living room, bedroom, kitchen and other spaces visualization.

### Why Choose Asha Builder

- ✓ Professional planning by an experienced team
- ✓ Modern and luxury design concepts
- ✓ Clear and detailed drawings for smooth and error-free construction
- ✓ Complete support from planning to construction

Our goal is to ensure that your home is designed with perfection, comfort, and modern aesthetics before the construction process begins.

### International Clients

- We also provide planning and construction consultancy services for international clients. 🌐
- If you are living outside India but want to build your house or commercial project in India, our complete planning and drawing services will be provided at our standard rate of ₹167 per sq. ft.
- If any client wants to build a project outside India, Asha Builder also offers international planning, design, and construction consultancy services.
- For projects located outside India, our professional planning and design charges start from \$50 per sq. ft., depending on the project requirements.
- If international clients wish to take complete construction services from Asha Builder, our team can also provide international construction consultancy, planning guidance, and project support to ensure the project is executed properly according to the approved design and standards.

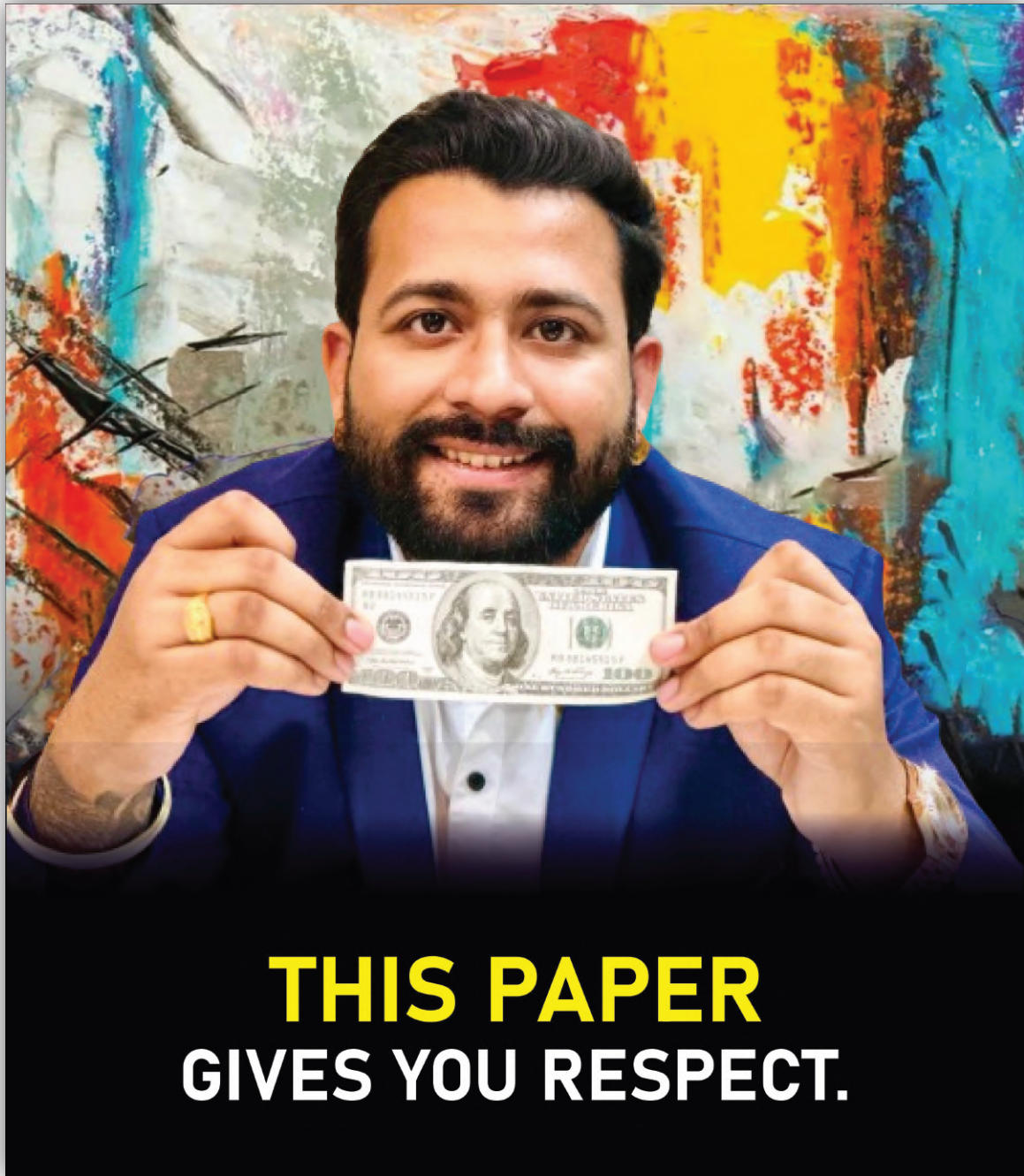
### Additional Custom Services

- If you require any additional house planning services apart from the ones mentioned above, or if you only need specific drawings from our provided services, those can also be arranged.
- In such cases, the drawing charges and process may vary depending on the specific services required.

### Note:

If you choose Asha Builder for construction, the drawing charges can be adjusted in the construction cost.

**Contact ASHA BUILDER today and start planning your dream home with expert guidance.**



**“Real estate is a long-term game. Don't try to get rich quick. Instead, focus on buying properties that will generate income and appreciate over time.”**

हमारा सपना सबका घर हो अपना ।



Thanks for Visiting

**ASHA BUILDER**

---

Ph. +91 77101-01301

Showroom No 6-7 Bank Square Market Opp. City Heart, Kharar Chandigarh Road